



Verrerie de Saint-Just

Since 1826, the glassmakers of Saint-Just have created beautiful sheets of Antique Glass. Each sheet has been mouth-blown in the centuries old traditional method. The skilled blowers bring life and movement to the surface of the glass, so that each sheet acquires its own individual character. The naturally rich quality of this glass makes it suitable for creative applications as well as for restoration work.



Stained Glass Artist, Gérard Geiss, Restoration of glass window named "Begule" created in 1895. Deliberation room in County Council of Rhône department.

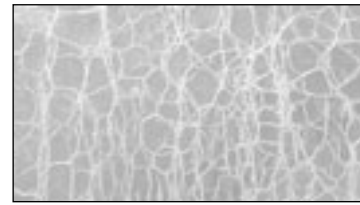
Clear Antiques



SJ-1-COL
Colonial - Plain with few Seeds
A



SJ-1-VER
Versailles - Plain with few Seeds
B



SJ-1-CQ
Antique Craquelé
C



SJ-1-RM
Antique Reamy
D



SJ-1-CORD
Cordele - Light Reamy with few Seeds
CC



SJ-MA1
Clear Antique
B



SJ-1-1XX
Antique - Light Seedy
B



SJ-1-2XX
Antique - Medium Seedy
B



SJ-1-3XX
Antique - Heavy Seedy
D

Flashed Antique

White Flashed on Color

Do not cut on Flashed side.



SJ-01-OFL
White Flashed
on Clear
F



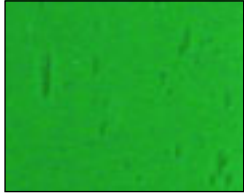
SJ-02-OFL
White Flashed
on Lt. Amber
F



SJ-04-OFL
White Flashed
on Gold
F



SJ-05-OFL
White Flashed
on Moss Green
F



SJ-09-OFL
White Flashed
on Aqua Green
F



SJ-11-OFL
White Flashed
on Periwinkle
F



SJ-14-OFL
White Flashed
on Lt. Rose
F



SJ-16-OFL
White Flashed
on Dk. Rose
F



SJ-17-OFL
White Flashed
on Grey Olive
F



SJ-19-OFL
White Flashed
on Taupe Tan
F



SJ-181-OFL
White Flashed
on Red
F

Color Flashed on Color

Do not cut on Flashed side.



SJ-206-FL
Red Flashed
on Blue Antique
F



SJ-208-FL
Blue Flashed
on Yellow Antique
F

Color Flashed on Clear

Do not cut on Flashed side.



SJ-5-FL
Red Flashed on
Clear Antique
E



SJ-15-FL
Blue Flashed on
Clear Antique
E



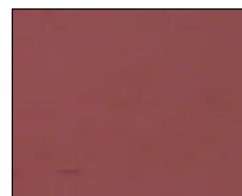
SJ-217-FL
Root Beer Brown Flashed
on Clear Antique
E



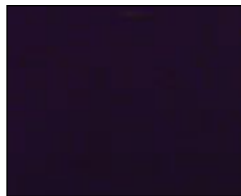
Side view of Blue over Yellow



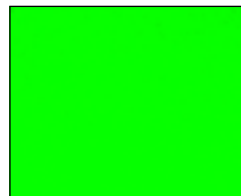
SJ-223-FL
Gold Pink Flashed on
Clear Antique
K



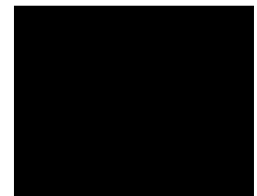
SJ-225-FL
Purple Violet Flashed
on Clear Antique
E



SJ-226-FL
Grape Violet Flashed
on Clear Antique
E



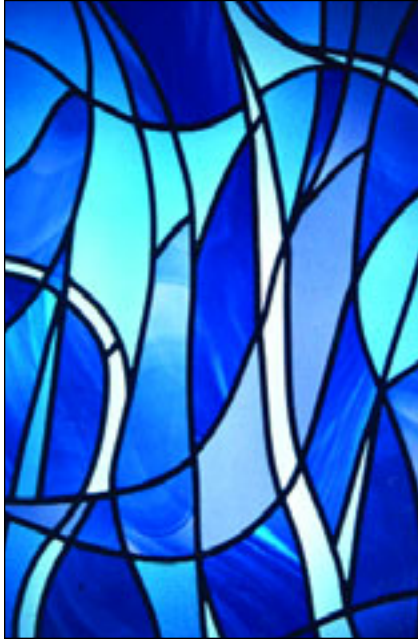
SJ-1275-FL
Green Flashed on
Clear Antique
F



SJ-BLACK-FL
Black Flashed on
Clear Antique
G



Stained Glass Artist, Massabau-Jouve



Antique Reamy



SJ-1-RM
Clear Reamy
D



SJ-9-RM
Jade Green Reamy
D



SJ-13-RM
Rose Reamy
D



SJ-14-RM
Pale Rose Reamy
D



SJ-1472-RM
Pale Blue Reamy
D



SJ-5284-RM
Mist Green Reamy
D



Stained Glass Artist, Guy Besson

Antique Craquele



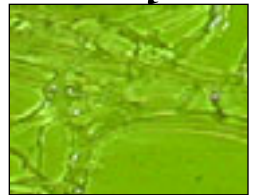
SJ-1-CQ
Clear Craquele
C



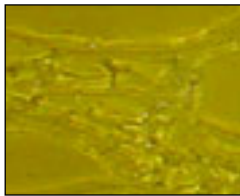
SJ-3-CQ
Pale Amber Craquele
C



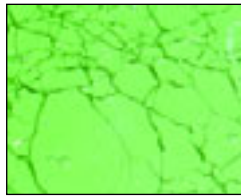
SJ-4-CQ
Golden Amber Craquele
C



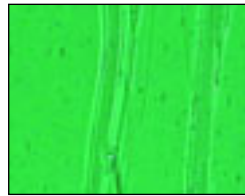
SJ-5-CQ
Moss Green Craquele
C



SJ-6-CQ
Lt. Bronze Craquele
C



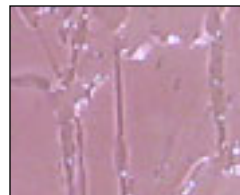
SJ-7-CQ
Mint Green Craquele
C



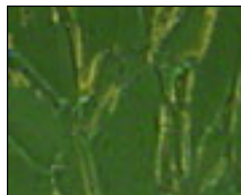
SJ-9-CQ
Aqua Craquele
C



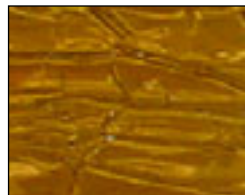
SJ-11-CQ
Soft Blue Craquele
C



SJ-14-CQ
Pale Rose Craquele
C



SJ-17-CQ
Silver Grey Craquele
C



SJ-19-CQ
Taupe Craquele
C

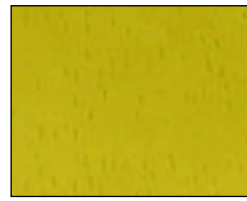


SJ-180-CQ
Red Craquele
E

Blown Antique



SJ-MA-5
Pale Lily Green Antique
B



SJ-MA-6
Sautern Amber Antique
B



SJ-MA-7
Fern Green Antique
B



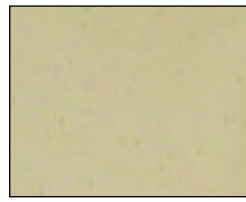
SJ-MA-9
Turquoise Blue Antique
B



SJ-MA-11
Heather Blue Antique
B



SJ-MA-12
Cornflower Blue Antique
B



SJ-MA-13
Pale Buff Beige Antique
B



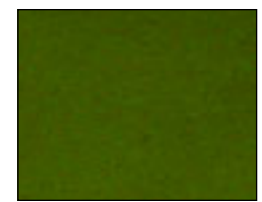
SJ-MA-15
Mauve Antique
B



SJ-MA-16
Rose Clover Antique
B



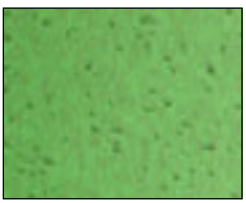
SJ-MA-17
Grey-Green Antique
B



SJ-MA-18
Willow Green Antique
B



SJ-MA-19
Warm Taupe Antique
B



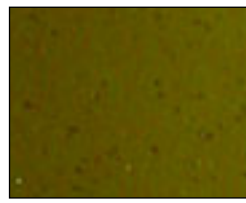
SJ-MA-21
Mouse Grey Antique
B



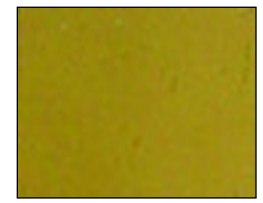
SJ-STD-015
Mosstone Green Antique
B



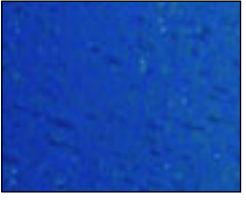
SJ-STD-018
Garden Green Antique
B



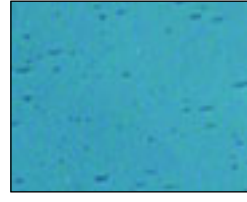
SJ-STD-024
Grey-Beige Antique
B



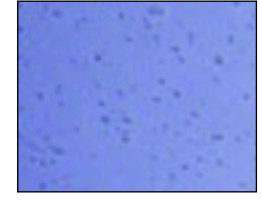
SJ-STD-025
Lt. Taupe Antique
B



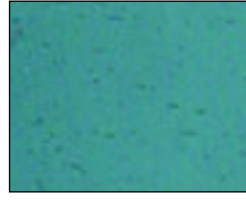
SJ-STD-111
Seaport Blue Antique
C



SJ-STD-117
Pearl Blue Antique
C



SJ-STD-131
Misty Violet Anitque
D

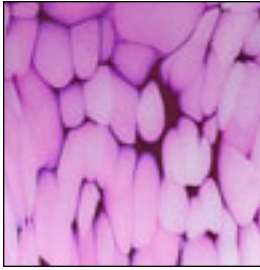


SJ-STD-152
Cadet Grey Antique
D

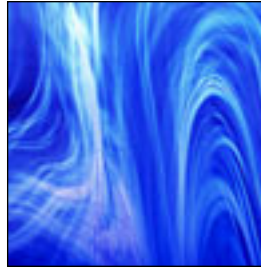


SJ-STD-303
Med. Blue Antique
C

Antique Bariolés



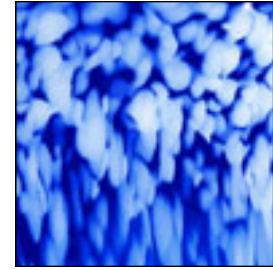
SJ-BAR-002*
Soft Peach-Pink
w/Puffs of White
J



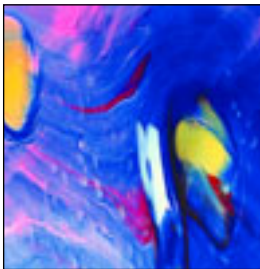
SJ-BAR-004
Dk. Blue w/Swirls
G



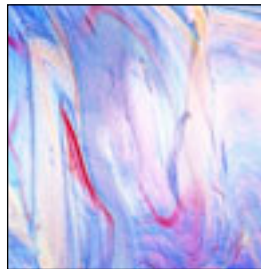
SJ-BAR-008*
Peach-Pink, Lt. Blue,
White w/Brown Streaks
H



SJ-BAR-009
Blue w/Puffs of White
G



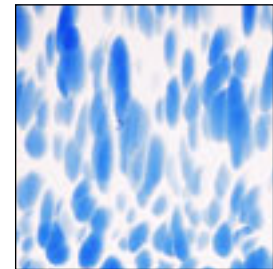
SJ-BAR-015
Blue w/Patches of Red
and Yellow
G



SJ-BAR-016*
White, Green, Yellow,
Pink, Blue Swirls
H



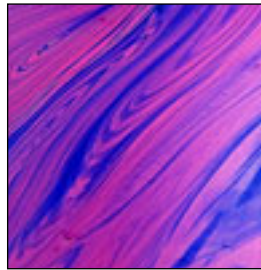
SJ-BAR-017
White and Yellow
H



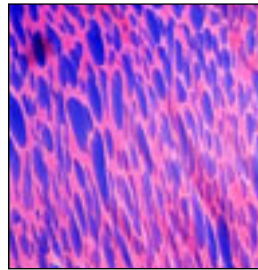
SJ-BAR-025*
Clear w/Blue Puffs
H



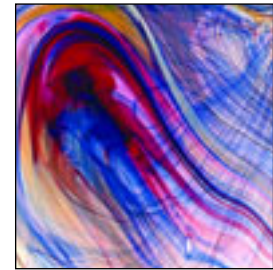
SJ-BAR-032*
Deep Pink w/Blue,
Brown and White
J



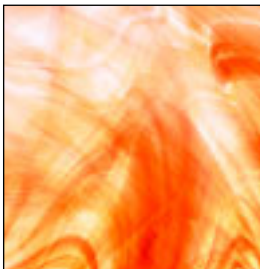
SJ-BAR-033
Pink w/Swirls of Blue
J



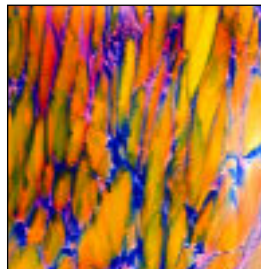
SJ-BAR-034
Gold Pink w/Blue Frit
Streaks
J



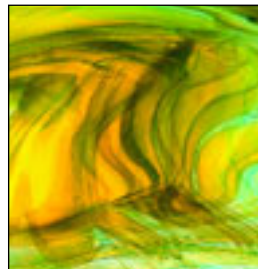
SJ-BAR-037*
Pink, Yellow, Blue and
White Swirls
H



SJ-BAR-048
Clear w/Orange Streaks
G



SJ-BAR-050
Pink w/Blue Streaks and
Yellow Puffs
H

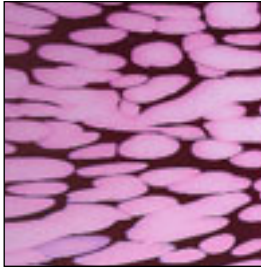


SJ-BAR-052
Yellow and Teal Swirls
J

Bariolés are not included in
St. Just sample sets.

*Discontinued color
(while current supply lasts).

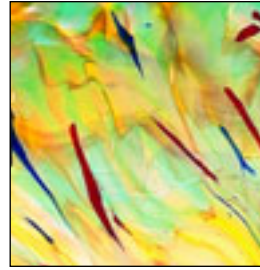
Antique Bariolés



SJ-BAR-011
Gold Pink w/Puffs of White
J



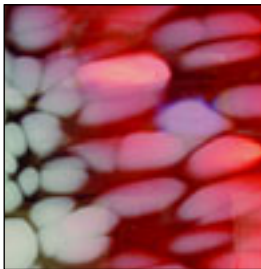
SJ-BAR-012
Peach-Pink w/Streaks
of White
J



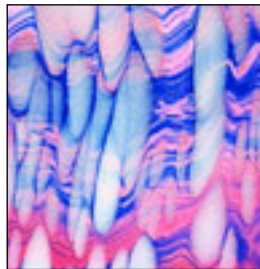
SJ-BAR-013
Streaks of Green, Yellow,
Red and White
H



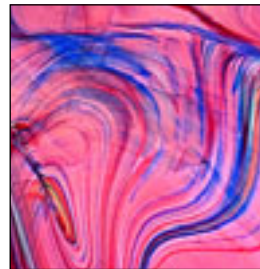
SJ-BAR-014
Clear, Red w/Dark Swirls
H



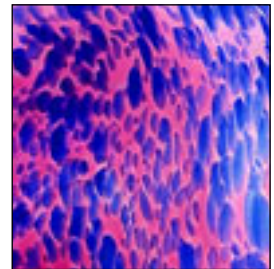
SJ-BAR-026
Red with White Puffs
J



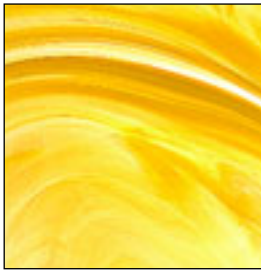
SJ-BAR-029
Pink w/Blue Streaks and
Puffs of White
J



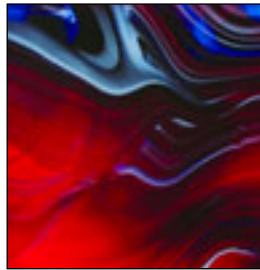
SJ-BAR-030
Lt. Pink w/Swirls of White,
Blue and Brown
J



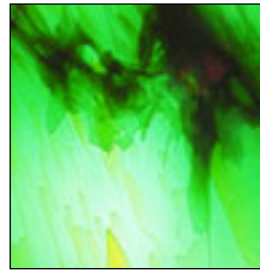
SJ-BAR-031
Pink w/Blue Puffs and
Wash of White
J



SJ-BAR-038
Yellow Streaks on Clear
G



SJ-BAR-041*
Red, Blue
H



SJ-BAR-042*
Green w/Yellow Swirls
H



SJ-BAR-044
Dk. Blue Streaks
G

