

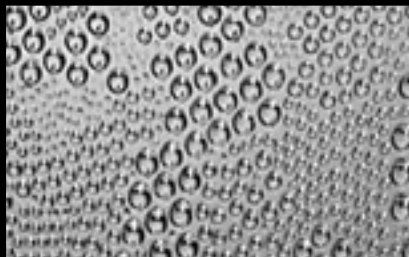
# Saint-Gobain Glass

## Clear Textures

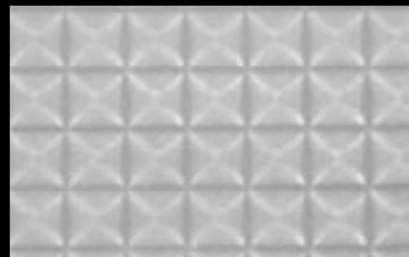
Clear Textures



**BASKET**



**CROCO**



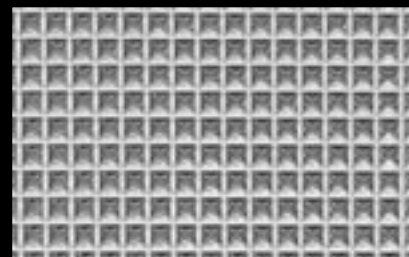
**CROSS-REEDED\***



**GLACIER**



**PAINT**



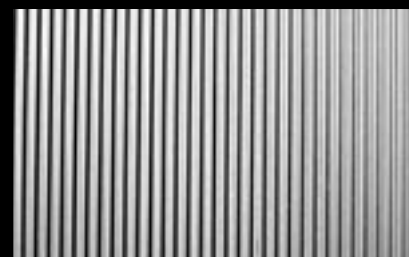
**QUADRILLE**



**RAIN**



**SPOTLYTE**



**THIN-REEDED**

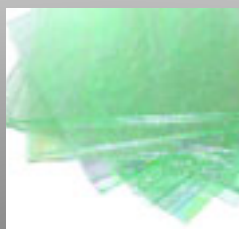
Sheet Size: Sheet size approx. 32" x 42".  
 Sample Box: Cat No. CT5B  
 Illustrations are not to scale.

\*Textured both sides.



### **N'ICICLES**

An assortment of Textured Clear Lites.  
 Contains 36 pieces cut 8" x 12" from various manufacturers.  
 (24 sq. ft.) (UPS)  
**Order as: NICICLES**



### **N'ICE PICKS**

An assortment of Textured Clear Lites.  
 Contains 25 pieces cut 12" x 12" from various manufacturers.  
 (25 sq. ft.) (UPS)  
**Order as: NICEPICK**



### **ICE-PACK 16**

Assorted Clears and Clear Textures from various manufacturers.  
 Contains 16 pieces cut 12" x 16" (21.3 sq. ft.) (UPS)  
**Order as: ICE-PACK-16**

# Pilkington Glass

## Clear Textures



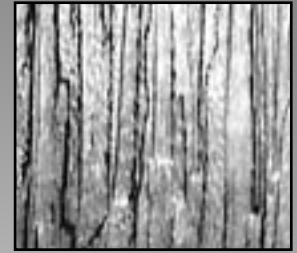
**ARCTIC**



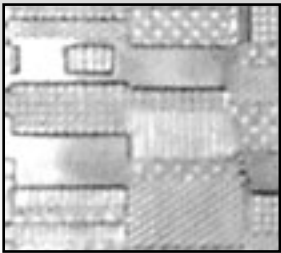
**AUTUMN**



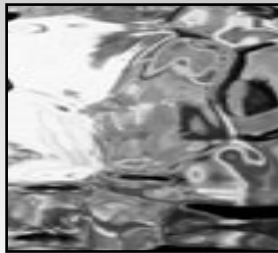
**CHANTILLY**



**COTSWOLD**



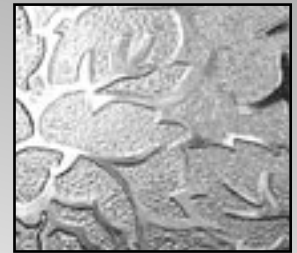
**DIGITAL**



**DOUBLE FLEMISH**



**EVERGLADE**



**FLORIELLE**



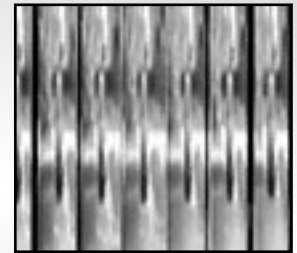
**MINSTER**



**OAK LEAVES**



**PELERINE**



**REEDED**



**STIPOLYTE**



**SYCAMORE**



**TAFFETA**

**Sheet Size:** Sheets are approximately 26" x 42" (66 x 106.7 cm.), which is 1/4 of a factory sheet measuring 52" x 84" (132 x 213cm). Sheet size may vary per shipment.

**Sample Box:** Cat No. CTSB

**Illustrations are not to scale.**