

Float Fire 82® By Armstrong Glass Company

A fusible line of colored glass compatible with float glass

| | | | | |
|---|---|---|--|---|
|  |  |  |  |  |
| F-600-LG C F-600-SM C Metallic Silver | F-601-LG A F-601-SM A White | F-602-LG A F-602-SM A Moss Green | F-603-LG A F-603-SM A Teal | F-604-LG A F-604-SM A Black |
|  |  |  |  |  |
| F-605-LG A F-605-SM A Yellow | F-606-LG A F-606-SM A Orange | F-607-LG A F-607-SM A Red-Orange | F-608-LG D F-608-SM D Rosewood | F-609-LG A F-609-SM A Dark Red |
|  |  |  |  |  |
| F-610-LG A F-610-SM A Grey | F-611-LG C F-611-SM C Metallic Gold | F-612-LG A F-612-SM A Olive Green | F-613-LG A F-613-SM A Caramel | F-614-LG A F-614-SM A Pink Champagne |
|  |  |  |  |  |
| F-615-LG D F-615-SM D Purple | F-616-LG D F-616-SM D Violet | F-617-LG A F-617-SM A Blue-Green | F-618-LG A F-618-SM A Periwinkle | F-619-LG A F-619-SM A Royal Blue |
|  |  |  |  |  |
| F-620-LG A F-620-SM A Blue-Grey | F-621-LG A F-621-SM A Green | F-622-LG A F-622-SM A Chamois | F-624-LG A F-624-SM A Midnight Blue | F-625-LG A F-625-SM A Dark Green |

FLOAT FIRE 82® SHEET SIZE (current stock): -LG Sheets approx. 17.5" x 15.5" (approx. 3 sq. ft.)
 Thickness: 2mm
 -SM Sheets approx. 5.5" x 13.75" (approx. 1.5 sq. ft.)

Float Fire 82® *By Armstrong Glass Company*

A fusible line of colored glass compatible with float glass

Float Fire 82®



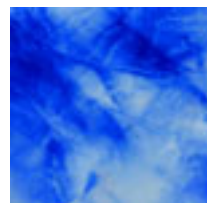
F-1000-LG A
F-1000-SM A
White



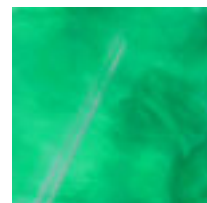
F-1001-LG A
F-1001-SM A
Champagne/White



F-1005-LG D
F-1005-SM D
Burgundy/White



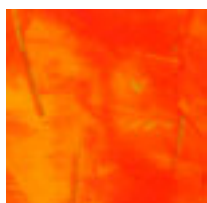
F-1007-LG D
F-1007-SM D
Cobalt Blue/White



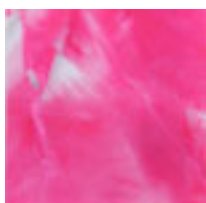
F-1008-LG A
F-1008-SM A
Aqua/White



F-1010-LG D
F-1010-SM D
Green/White



F-1013-LG D
F-1013-SM D
Orange/Yellow



F-1017-LG D
F-1017-SM D
Flamingo/White



F-1018-LG A
F-1018-SM A
Light Blue/White



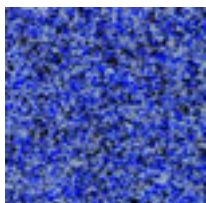
F-1021-LG D
F-1021-SM D
Pale Yellow/White



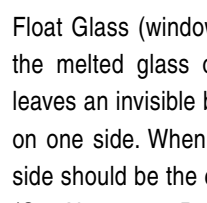
F-1020-LG A
F-1020-SM A
Black/White



F-1210-LG E
F-1210-SM E
Black Granite



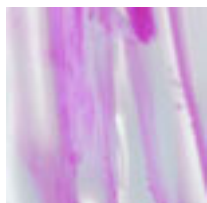
F-1250-LG E
F-1250-SM E
Blue Granite



F-1250-LG E
F-1250-SM E
Blue Granite



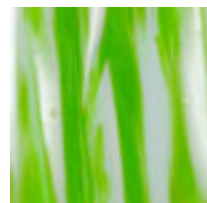
F-2002-LG B
F-2002-SM B
Caramel/White



F-2005-LG D
F-2005-SM D
Burgundy/White



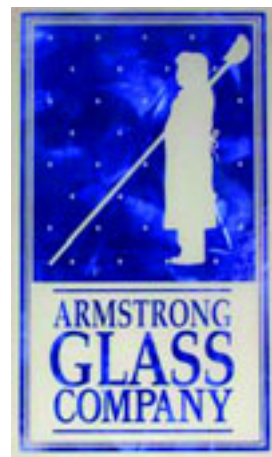
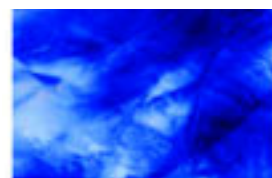
F-2006-LG D
F-2006-SM D
Red/White



F-2010-LG C
F-2010-SM C
Green/White

Float Glass (window glass) is produced by flowing the melted glass over a bed of molten tin. This leaves an invisible but sometimes problematic haze on one side. When fusing with Float Fire, the "tin" side should be the exposed side. An ultraviolet light (Cat. No. 52180, Page A22) is a suitable light source for detecting the filmed tin side of the glass.

**IDEAL FOR
SANDBLASTING**



FLOAT FIRE MINI SAMPLER

Assortment of 18 styles cut approx. 9" x 10.5". All 82 C.O.E.
Order As: FF-MINI

FLOAT FIRE SAMPLE BOX

Cat. No. FF5B

SUGGESTED

FIRING

TEMPERATURE

Tack Fuse/Slump:

1415-1450°F

(768-788°C)

Full Fuse: 1525-

1560°F (829-849°C)

Anneal: 1050°F

FLOAT FIRE COMBO PACK

Assortment of 5 styles cut approx. 13.5" x 15.5". All 82 C.O.E.

Order As: FF-COMBO-PACK

OTHER PRODUCTS

Compatible Float Glass
Frit & Stringers and
Tin Detector, see page A22-A23.