

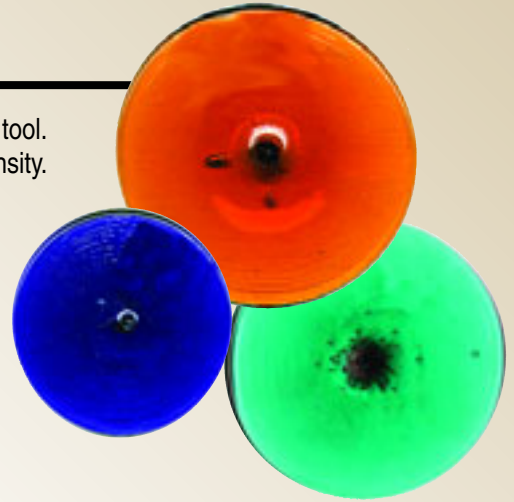
Rondels are available Special Order Only to be drop-shipped from factory. All rondel colors listed on the facing page can be ordered in any quantity. Other colors (any other existing Kokomo colors) can be special ordered with a minimum purchase designated by manufacturer. Orders may require 4-6 weeks. These rondels are a hand-made, artistic product. There will be variations in color, size, thickness, roundness, etc. Pontil marks are sharp. Handle carefully.

Spun Rondels

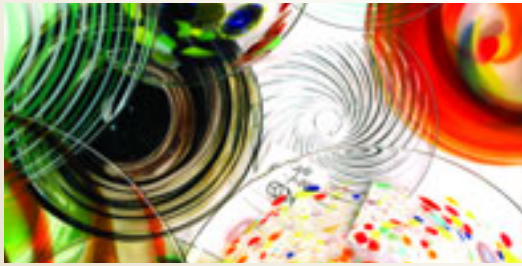
A spun rondel is created by a single gather of glass that is shaped by a footing tool. It is a solid color, and when compared to sheet glass, a shade darker in density. There is often a subtle ridge-like appearance on the punty side. These are an economical option. Spun rondels can be made in sizes that range from 2" to 4".

Spun Rondels are available in the following sizes only: 2", 3" and 4".

All Kokomo Rondels Special Order Only

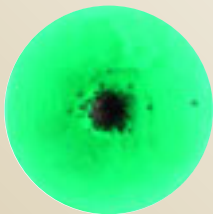


Flashed Rondel

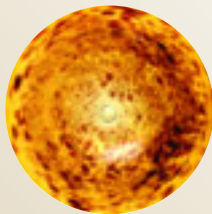


A flashed rondel is created by a gather of color over a gather of clear. More labor intensive, a bubble is blown and opened to form the rondel. When compared to sheet glass, the color is a shade lighter in density. Color density can be manipulated to a certain degree. The surface of the rondel is very smooth. Flashed rondels can be made in sizes that range from 3" to 20".

Flashed Options



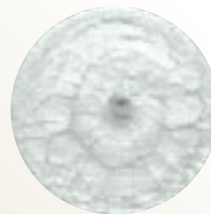
Single Color Solid



Single Color Frit



Optic



Craquel



Hot Wrap
(on clear or color)



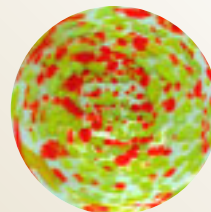
Murrini



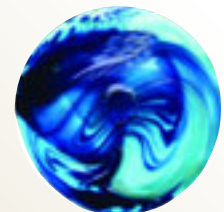
Pinwheel
(up to 3 colors)



Wacky Wrap



Multi-Color Frit



Frit Swirl



33

Standard Rondel Colors



Colors relatively accurate.
For reference only.



PB



18D



18L



41



216LL



225LL



257LL



509



510



600



608



611



617



620



628



637



652*



654



659



661



665



690



701*



709



806



809



855



860



865



870

All Rondel colors listed can be ordered in any quantity. *Certain colors are not appropriate for spun rondels due to color density. Other colors (any other existing Kokomo color) can be special ordered with a minimum purchase designated by the manufacturer. All non-stock orders may require 4-6 weeks for production. When ordering rondels, please be as specific as possible as to how they will be used. Inquire about charges for grinding to exact sizes and cutting of bullseyes.

Mirrored and Float Glass

MIRRORED GLASS

MIRROR - SILVER DOUBLE STRENGTH

Cat. No. 1200-36*

24" x 36" (609 x 914mm) size sheets may be consolidated with other glass for crated shipments.

FRONT SURFACE MIRROR

Cat. No. 12015*

Aluminized. Each 12-1/2" x 16" (317 x 406mm) sheet is laminated with a protective cover.
3/64" (1.2mm) thick.

***NOTE:** These styles are not mixable with other glass for quantity discount.

FLOAT GLASS

DOUBLE STRENGTH GLASS

Cat. No. 1202*

Clear float, double strength glass.

Sheet Size: 24" x 36" (609 x 914mm)

Sheet Thickness: 1/8" (3mm).

SINGLE STRENGTH

Cat. No. 1203*

Clear float, single strength glass.

Sheets Size: 24" x 36" (609 x 914mm)

Sheet Thickness: 3/32" (2.3mm).

THIN GLASS

Cat. No. 1110*

Used to sandwich pressed flowers, filigrees, etc.

Sheet Size: 10" x 14" (254 x 355mm);

Sheet Thickness: 3/64" (1mm).

Glass Sample Sets

Each set is labeled with the manufacturer's number. Most sample sets are supplied by the manufacturer and contain most stocked colors. Some sets contain styles not regularly stocked, but can be special ordered.

NOTE: Each individual sample is only relatively accurate due to variation in sheet thickness, color per batch, and variation of color mix within the sheet from which the sample was cut. This is especially true of antiques and art glass.

Cat. No.	Description
ARM-SB	Armstrong Standard Set
BE-SBSG	Bullseye Stained Glass Set
BE-SBKF	Bullseye Kilnformed Glass Set
CA-SB	Chroma Antique Samples
CBS-SB-90	CBS Dichroic Colors 90 C.O.E.
CBS-SB-96	CBS Dichroic Colors 96 C.O.E.
CBS-TEXPACK-1	CBS Dichroic Textures 90 C.O.E.
CBS-TEXPACK-2	CBS Dichroic Textures 96 C.O.E.
CT-SB	Clear Textures; Pilkington, St. Gobain
DM-SB-Black	DichroMagic™ on Black (90 or 96)
DM-SB-Clear	DichroMagic™ on Clear (90 or 96)
DL-90-KIT	DichroLux™ 90 C.O.E.
DL-S96-KIT	DichroLux™ 96 C.O.E.
EM-SB	English Muffle Samples
EF-SB	Easy Fuse 82 C.O.E.
FF-SB	Float Fire 82 C.O.E.
GC-SB	Glue Chip Colors
KOK-SB	Kokomo Standard Set

Cat. No.	Description
NASB	New Antique FSA - GNA
OC-SB	Oceana Sample Set
OC-900-SB	Oceana 900 Series
OP-SB	Optimum Clear Textures
SP-AAG-SB	Spectrum Architectural Clears
SP-MASB	Spectrum Master Sample Set
SP-STSB	Spectrum Standard Sample Set
SP-Silver-SB	Spectrum SilverCoat™
SP-96-SB	System 96 - Spectrum & Uroboros
UR-SB	Uroboros - Tiffany Set
UR-AFSB	Uroboros - Fusible-90 C.O.E.
WAS-SAM-SET	Wasser 90 C.O.E. Samples
WI-SB	Wissmach Standard Set
WI-VM-SB	Wissmach Victorian Mottles
WI-MYS-SB	Wissmach Mystic Streaky - Wispy
YG-HS-SB	Youghiogheny - Virtuoso Glass
YG-RG-SB	Youghiogheny - Repro Glass
YG-STIP-SB	Youghiogheny - Stipple Glass